

Sources of information:



American Cancer Society
<https://www.cancer.org/cancer/cervical-cancer/prevention-and-early-detection/can-cervical-cancer-be-prevented.html>



Community Care Fund-Cervical Cancer Vaccination Pilot Scheme, The FPAHK
https://www.famplan.org.hk/ccfvaccine/Cervical_Cancer_Vaccination.html



Department of Health, HKSAR
<https://www.cervicalscreening.gov.hk/>



Hong Kong Cancer Registry, Hospital Authority
<http://www3.ha.org.hk/cancereg/>



The Family Planning Association of Hong Kong (FPAHK)
<https://www.famplan.org.hk/en/our-services/clinic-services/youth-health-care/fee>



<https://www.famplan.org.hk/en/locate-us?location%5B%5D=2&location%5B%5D=3>



World Health Organization
<https://www.who.int/reproductivehealth/topics/cancers/hpv-vaccination/en/>



香港中文大學
The Chinese University of Hong Kong



香港中文大學醫學院
Faculty of Medicine
The Chinese University of Hong Kong



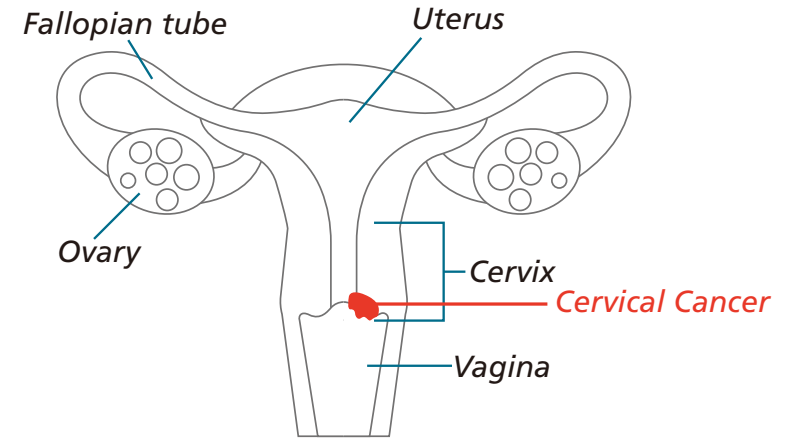
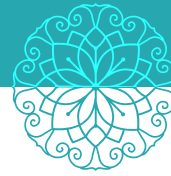
香港中文大學醫學院那打素護理學院
The Nethersole School of Nursing
Faculty of Medicine
The Chinese University of Hong Kong

Gather youth power
Bye cervical cancer
Get your HPV vaccine





What is cervical cancer?	1
Risk factors of cervical cancer	2
Signs & symptoms	3
Prevention of cervical cancer in daily life "2Hs"	4
All about HPV vaccines in Hong Kong	5
Accessibility and affordability	6
Local HPV vaccination providers from public sectors	8



- Cancer starts in the cervix, which is the lower part of womb.
- Cervical cancer may develop if there is persistent infection of the cancer-causing or high risk type Human Papillomavirus (HPV).

The **7th** commonest cancer among females in Hong Kong accounted for 3.3% of all new cancer cases in females in 2015.

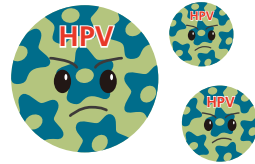
Mortality: **9th** leading cause of female cancer deaths in Hong Kong accounting for 2.6% of female cancer deaths in 2016.

(Hong Kong Cancer Registry, Hospital Authority, 2018)



Risk factors of cervical cancer

Persistent Human Papillomavirus (HPV) infection



Multiple sexual partners/
sexual partner
with multiple sexual partners

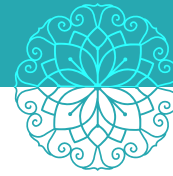


Early sex contact

Weakened immunity



Smoking



Signs & symptoms



No obvious symptoms at early stage



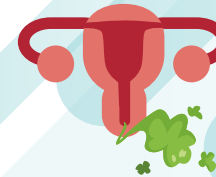
Heavier menstrual blood loss

Abnormal bleeding during
regular menstrual period



Longer menstrual period

Vaginal discharge with bad smell



Vaginal bleeding during or
after sexual intercourse

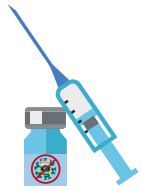


Prevention of cervical cancer in daily life



Have a healthy lifestyle

- Safe sex
 - Single sex partner
 - Having multiple sexual partners will increase the risk to get HPV virus.
 - Use of condom
 - Minimizing the contact with virus during sexual contact.
- Improve body immunity by
 - Avoid smoking: both first-hand and second-hand
 - Balanced diet:
 - Intake more fibers e.g.: fruit, vegetables, beans and cereals.
 - Eat less meat, less food with high fat, salt and sugar level.

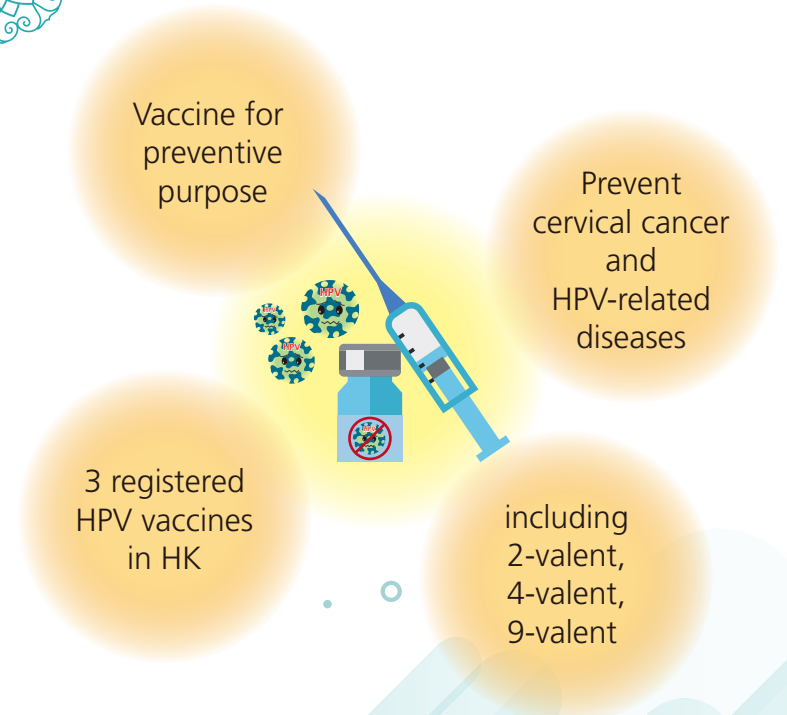
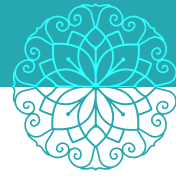


HPV vaccination

- Prevent cervical cancer by against high-risk HPV types 16 and 18
 - HPV types 16 and 18 accounts for 70% of all cervical cancer cases.
- When should you receive?
 - World Health Organization recommends HPV vaccination for all females aged 9-13 before any sex contact.
- Series of injections given within 6 months
 - 2 injections for 9-14 years old
 - 3 injections for 15 years old and above
 - Get full protection after receiving all 3 doses
- Common side effects: pain and swelling at the injection site, fever, nausea and vomiting

Reminder: Still have to undergo cervical screening (pap smear) after HPV vaccination

All about HPV vaccines in Hong Kong



Effectiveness of HPV vaccines

	2-valent	4-valent	9-valent
Against HPV	HPV-16,18	HPV-6,11,16,18	HPV-6, 11, 16, 18, 31, 33, 45, 52, 58
Target	Females age ≥9	Both males and females age ≥9	Both males and females age ≥9
Prevention of cervical cancer	✓	✓	✓
Prevention of genital warts	✗	✓	✓



Accessibility and affordability

- Private sector:
 - Total fee for getting vaccinated varies among clinics and registered doctors.
 - Approximate price range:
 - Vaccine costs from HK\$1200 -1700 per dose (3/2019) (Full course: 3 doses)
 - Doctor consultation fee: ~HK\$ 800
- Public sector:
 - The Family Planning Association of Hong Kong (FPAHK)
 - 2-valent: \$800 per dose
 - 4-valent: \$900 per dose
 - 9-valent: \$1300 per dose (Full course: 3 doses)
- Community Care Fund: Cervical cancer vaccination pilot scheme implemented by the FPAHK
 - For teenage girls from low-income families.
 - Beneficiaries must apply and receive the 1st dose of vaccine on or before 30th September, 2019 and finish the whole course by the end of March 2020.

Target Beneficiaries

Eligibility criteria	Fees to be paid
<ul style="list-style-type: none"> ● Girls aged 9-18, receiving Comprehensive Social Security Assistance (CSSA) ● Girls aged 9-18, from households under the Working Family Allowance Scheme ● Females students aged ≥9, receiving Full Grant under School Textbook Assistance Scheme 	FREE
<ul style="list-style-type: none"> ● Female students ≥ 9, receiving Half Grant under School Textbook Assistance Scheme 	HK\$100 per dose

Application details refer to https://www.famplan.org.hk/ccfvaccine/Application_Details.html



Community Care Fund Cervical Cancer Vaccination Pilot Scheme





Local HPV vaccination providers from public sectors

○ The Family Planning Association Clinics

Wan Chai Clinic (G/F) Wan Chai Sexual & Reproductive Health Centre (9/F)	G/F & 9/F, Southorn Centre, 130 Hennessy Road, Wan Chai, HK (MTR Wan chai Station Exit B1)
Ma Tau Chung Clinic (G/F-2/F)	105 Ma Tau Chung road, Kln.
Wong Tai Sin Clinic	G/F, 1-2 Lung On House, Lower Wong Tai Sin Estate II, Kln
Yuen Long Clinic (G/F)	G/F, 149-153 On Ning Road, Yuen Long, N.T. (MTR Long Ping Station Exit B2)
Yuen Long FPAHK Anita Mui Health Centre (1/F)	FPAHK Anita Mui Health Centre, 1/F, 149-153 On Ning Road, Yuen Long, N.T. (MTR Long Ping Station Exit B2)
Tsuen Wan Clinic	Room 1621-1622, 16/F, Nan Fung Centre, 264-298 Castle Peak Road, Tsuen Wan, N.T. (MTR Tsuen Wan Station Exit A)

○ Youth Health Care Centre of Family Planning Association of Hong Kong

Wan Chai Youth Health Care Centre	FPA Jockey Club Youth Zone, 8/F, Southorn Centre, 130 Hennessy Road, Wan Chai, H.K. (MTR Wan Chai Station Exit B1)
Mong Kok Youth Health Care Centre	Room A, 13/F, Full Win Commercial Centre, 573 Nathan Road, Kln. (MTR Yau Ma Tei Station exit A1)
Kwai Fong Youth Health Care Centre	Unit 702-705, Level 7, Towel II, Metroplaza, 223 Hing Fong Road, Kwai Chung, N.T. (MTR Kwai Fong Station Exit D)